



# Ramps & Terminal Demolition

July 13, 2010

# Transbay Transit Center

**TJPA**





Transbay Transit Center

# Demolition

## Notices to Proceed

- NTP 1 – Pre-demolition work (January 4, 2010):
  - Obtain permits/approvals necessary to perform work
  - Develop and submit information necessary to perform work
- NTP 2 – Demolition work (August 7, 2010):
  - Site Preparation
    - Secure Ramps/Building
    - Mobilize Equipment
  - Demolition
    - Abatement of Hazardous Materials
    - Demolish Structures and Stockpile Materials
    - Muni OCS Work



Transbay Transit Center

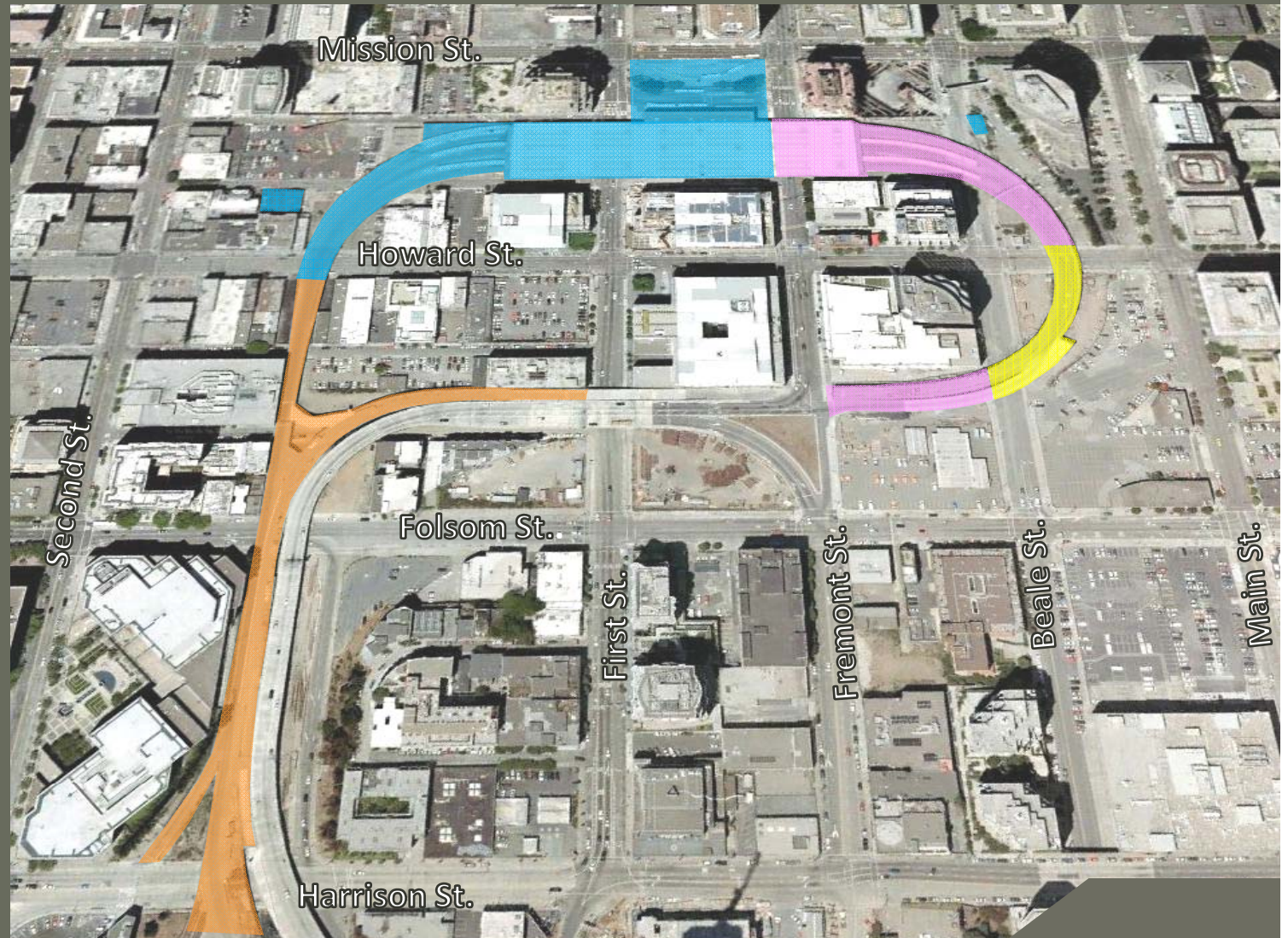
# Demolition Phasing

**Phase 1 (16 days):**  
Aug 7, 2010 – Aug 28, 2010

**Phase 2 (64 days):**  
Aug 29, 2010 – Oct 31, 2010

**Phase 3 (120 days):**  
Nov 1, 2010 – Feb 28, 2011

**Phase 4 (60 days):**  
Mar 1, 2011 – Apr 29, 2011





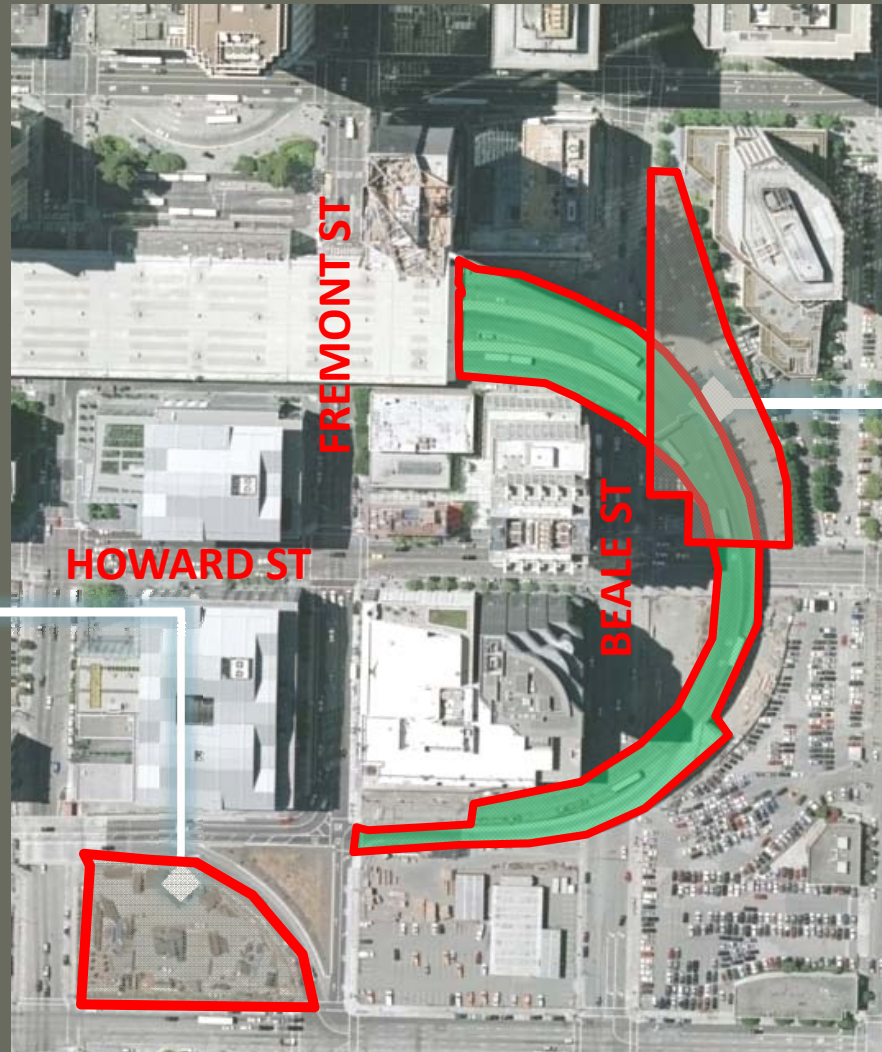
Transbay Transit Center

# Demolition of Eastern Ramps

Aug 13 – Sept 26

- CONTRACTOR STORAGE
- NON-POTABLE WATER STORAGE
  - TOOL / MATERIAL STORAGE

- CONCRETE MANAGEMENT
- MATERIAL PROCESSING
  - CONCRETE STOCKPILING

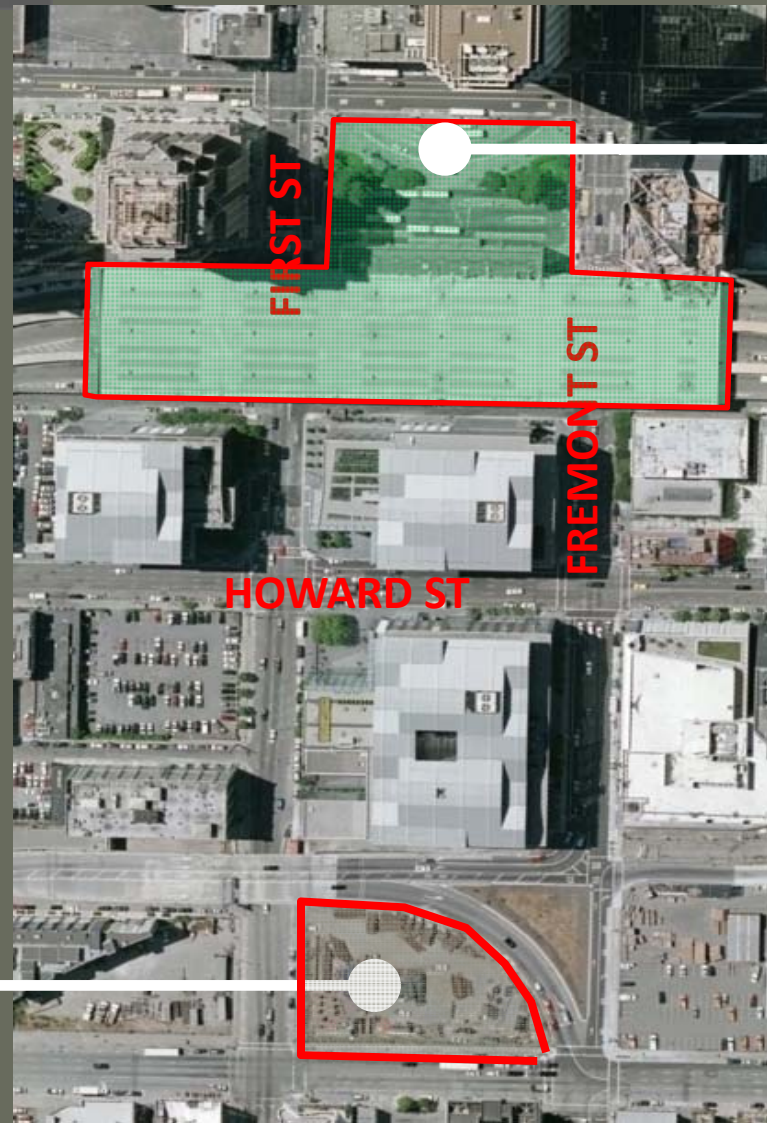




Transbay Transit Center

# Terminal Building Demolition

Aug 27 – Nov 26



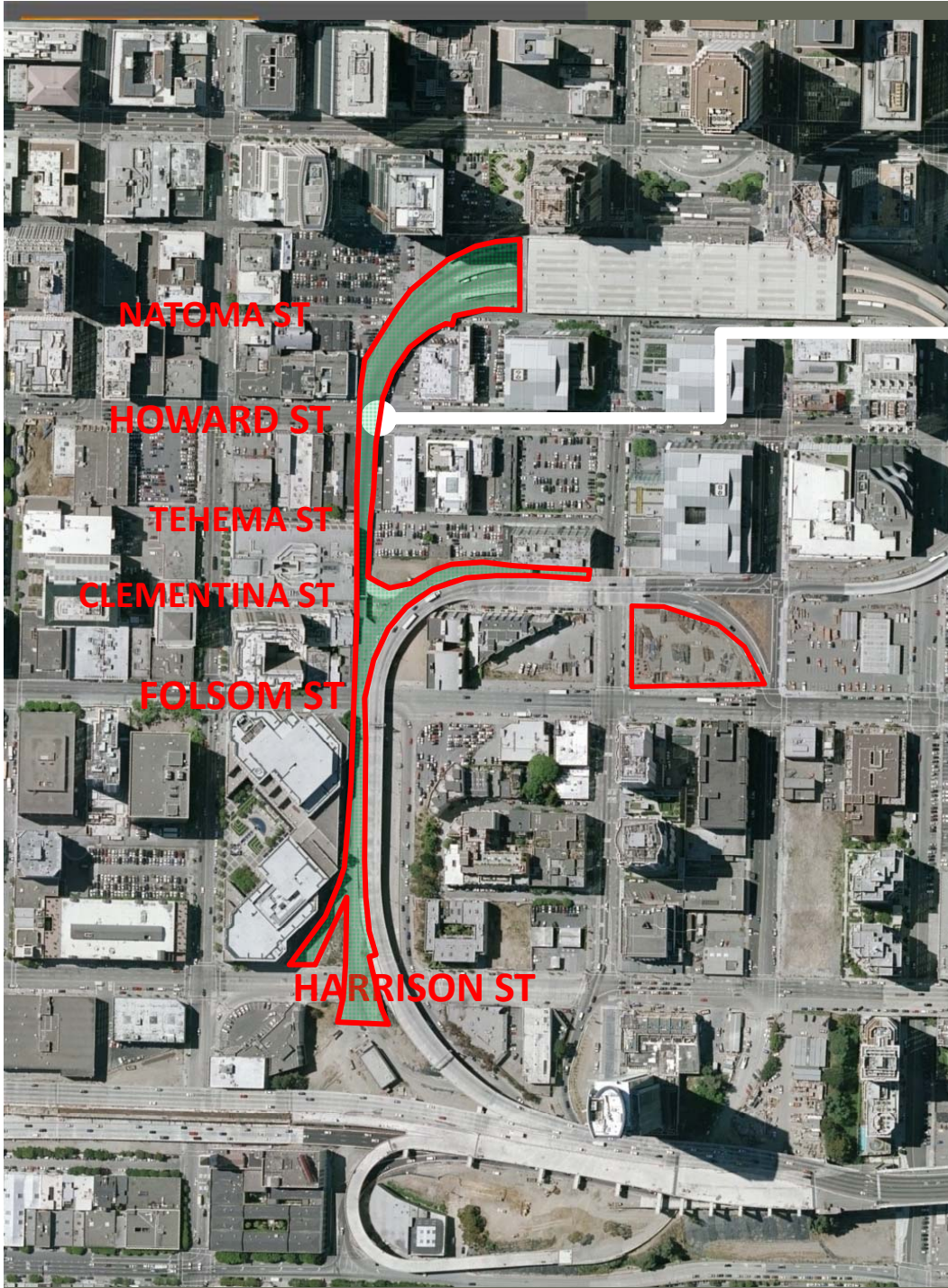
ONSITE CONCRETE  
RECYCLING OPERATION

CONTRACTOR STORAGE



# West Ramp Demolition

Nov 29 – Apr 26



HOWARD ST. OVERCROSS  
ONE WEEKEND CLOSURE  
MUNI INTERFACE

WEEKDAY CLOSURES:  
NATOMA, TEHEMA,  
CLEMENTINA, FOLSOM,  
HARRISON

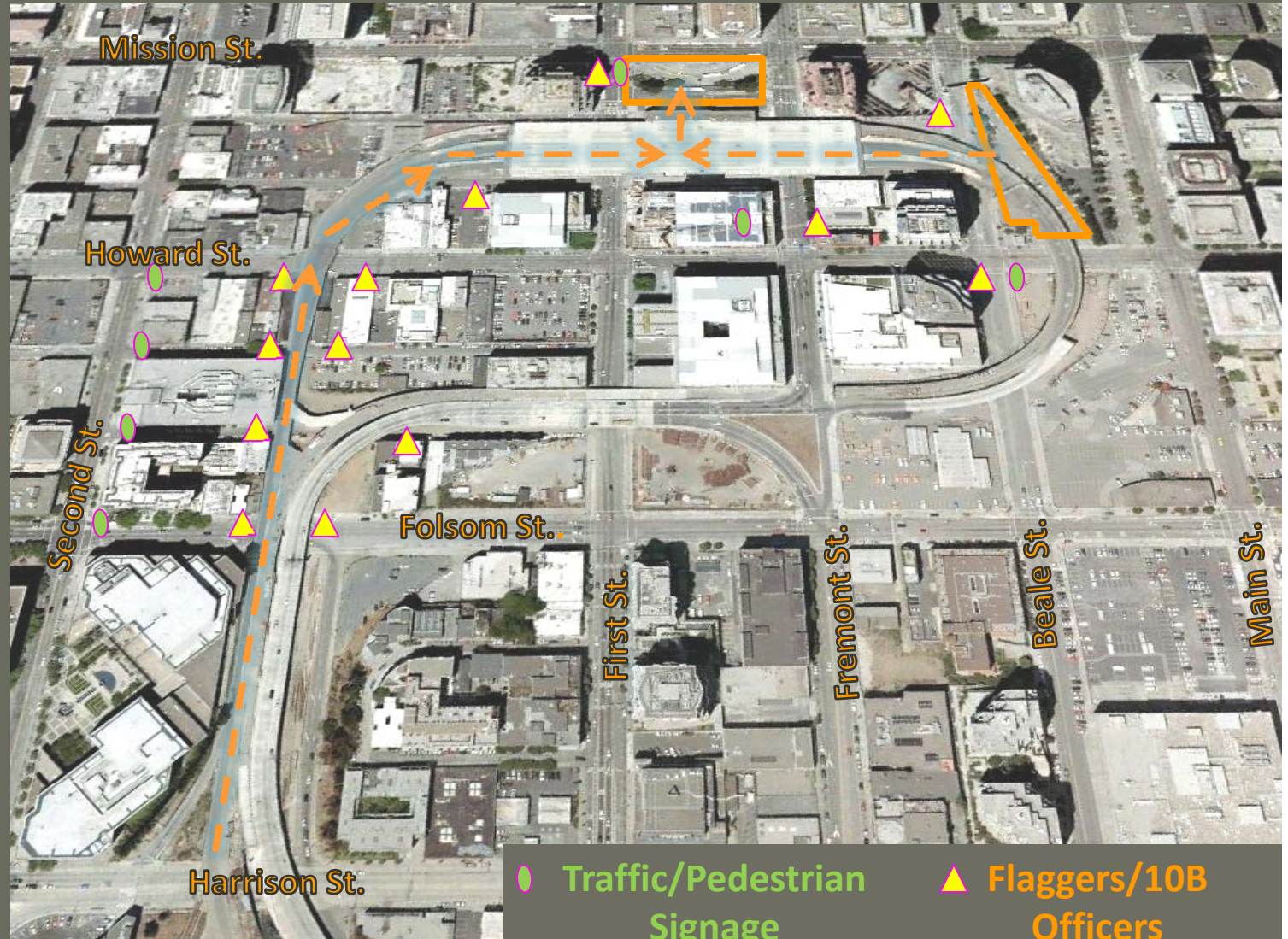


Transbay Transit Center

# Daytime Traffic Impacts Demolition of Ramps & Terminal

- Ramp demolition and OCS work
- Material movement to stockpile site
- Work Hours: Daytime (7am – 5pm)

← — — Haul route to crusher





Transbay Transit Center

# Nights & Weekends Traffic Impacts Demolition of Eastern Ramps

- Ramp demolition and OCS work
- Material movement to stockpile site
- Work Hours:  
Daytime (non peak)  
Nighttime (8pm – 7am)  
Weekends (7am – 8pm)  
(TJPA and DPW)

 Impacted area

 Haul route to crusher







Transbay Transit Center

# Nights & Weekends Traffic Impacts Demolition of Terminal

- Ramp demolition and OCS work
- Material movement to stockpile site
- Work Hours:  
Daytime (non peak)  
Nighttime (8pm – 7am)  
Weekends (7am – 8pm)  
(TJPA and DPW)

★ Impacted area

← Haul route to crusher





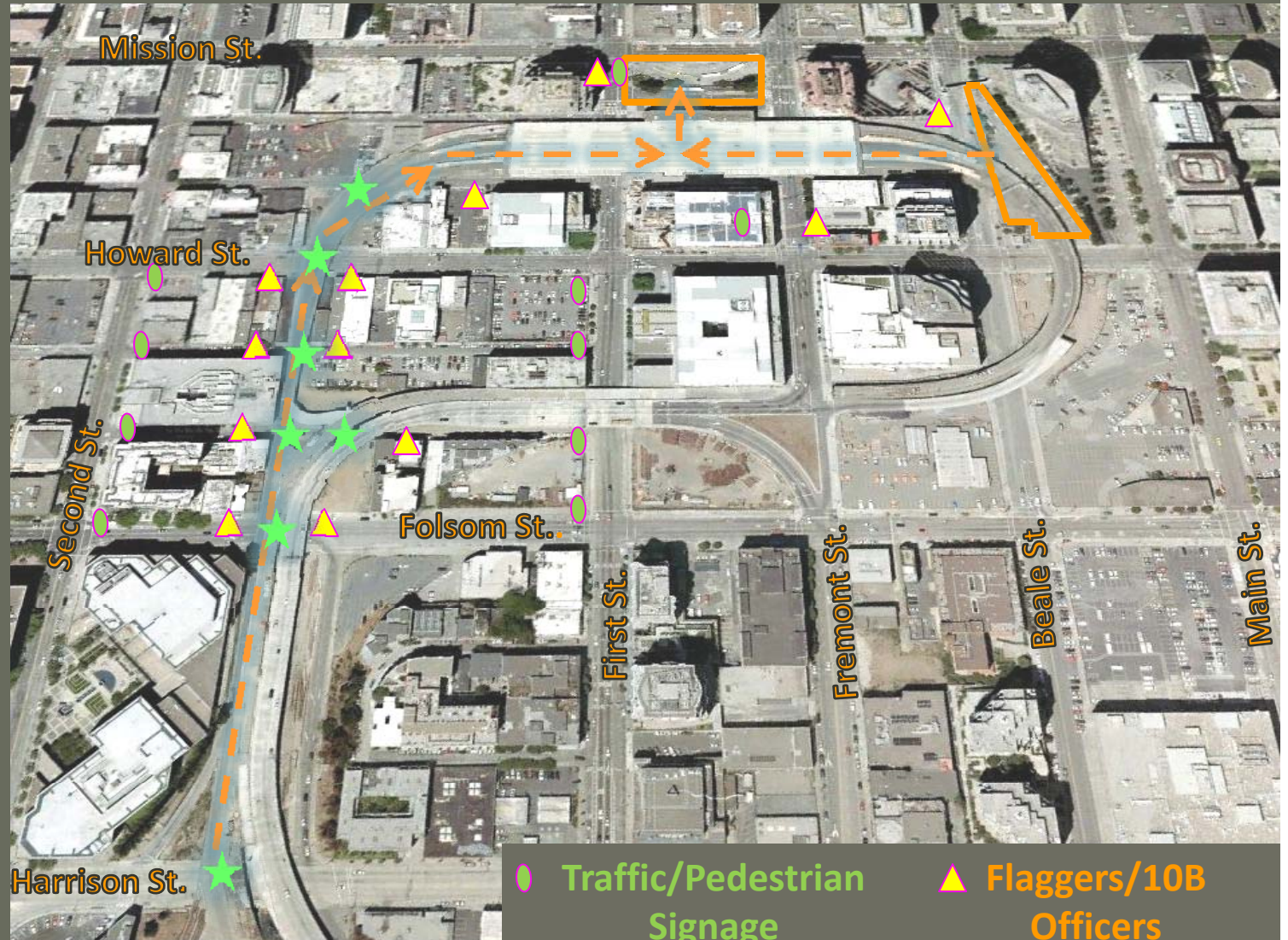
Transbay Transit Center

# Traffic Impacts Demolition of Western Ramps

- Ramp demolition and OCS work
- Material movement to stockpile site
- Work Hours:  
Daytime (non peak)  
Nighttime (8pm – 7am)  
Weekends (7am – 8pm)  
(TJPA and DPW)

 Impacted area

 Haul route to crusher

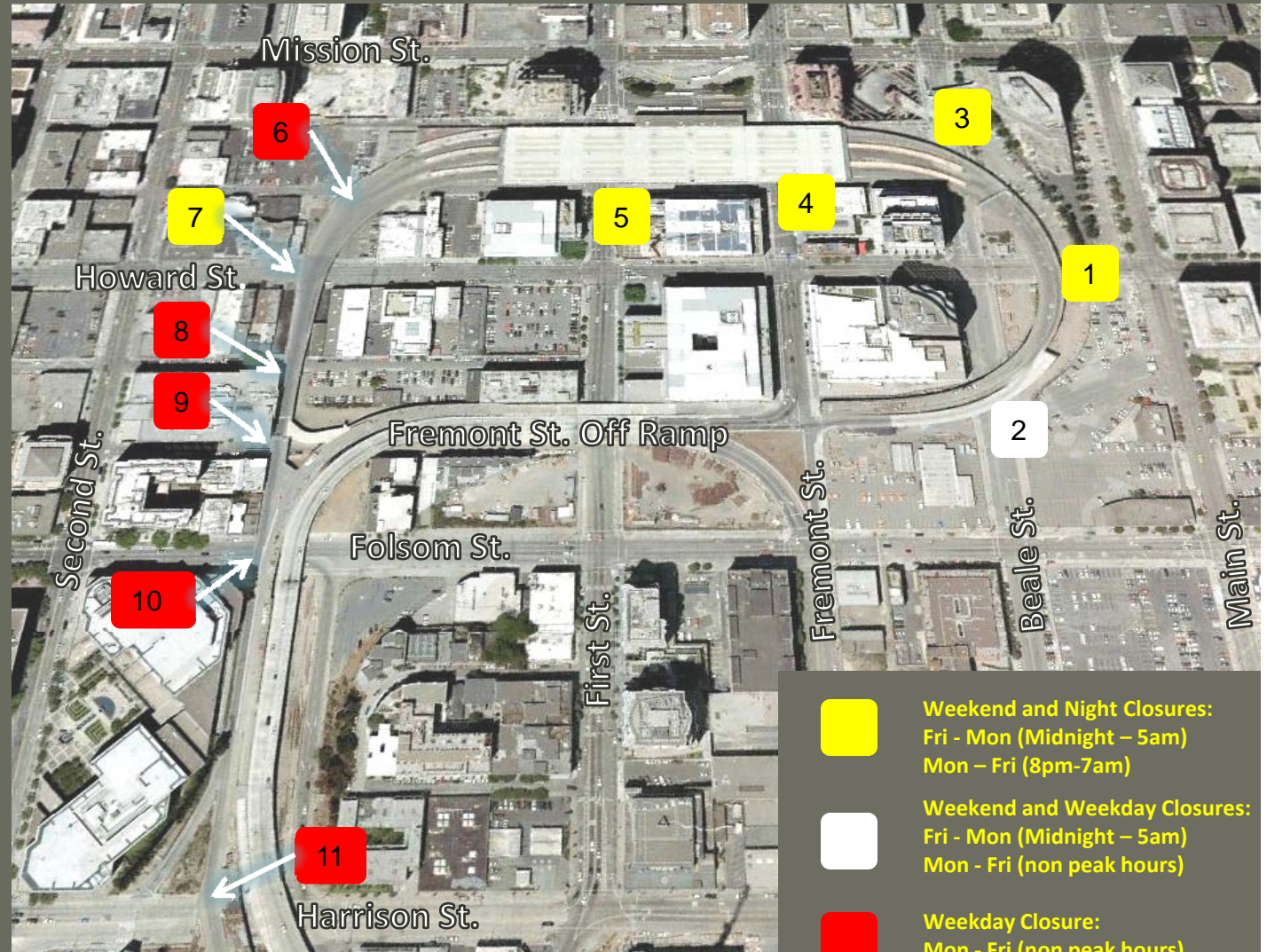




Transbay Transit Center

# Street Closures and Bridge Demolition

- 1 Fri Aug 13 - Mon Aug 16
- 2 Fri Aug 20 - Fri Aug 27
- 3 Fri Aug 27 - Sun Sept 26
- 4 Thurs Sept 30 – Sun Oct 10
- 5 Thurs Oct 14 – Sun Oct 24
- 6 Mon Nov 29 – Wed Dec 15
- 7 Thurs Dec 16 – Sun Dec. 19
- 8 Tues Jan 18 – Thurs Jan 20
- 9 Thurs Feb 10 – Mon Feb 14
- 10 Mon Feb 21 – Wed Feb 23
- 11 Mon Mar 7- Thurs Mar 17

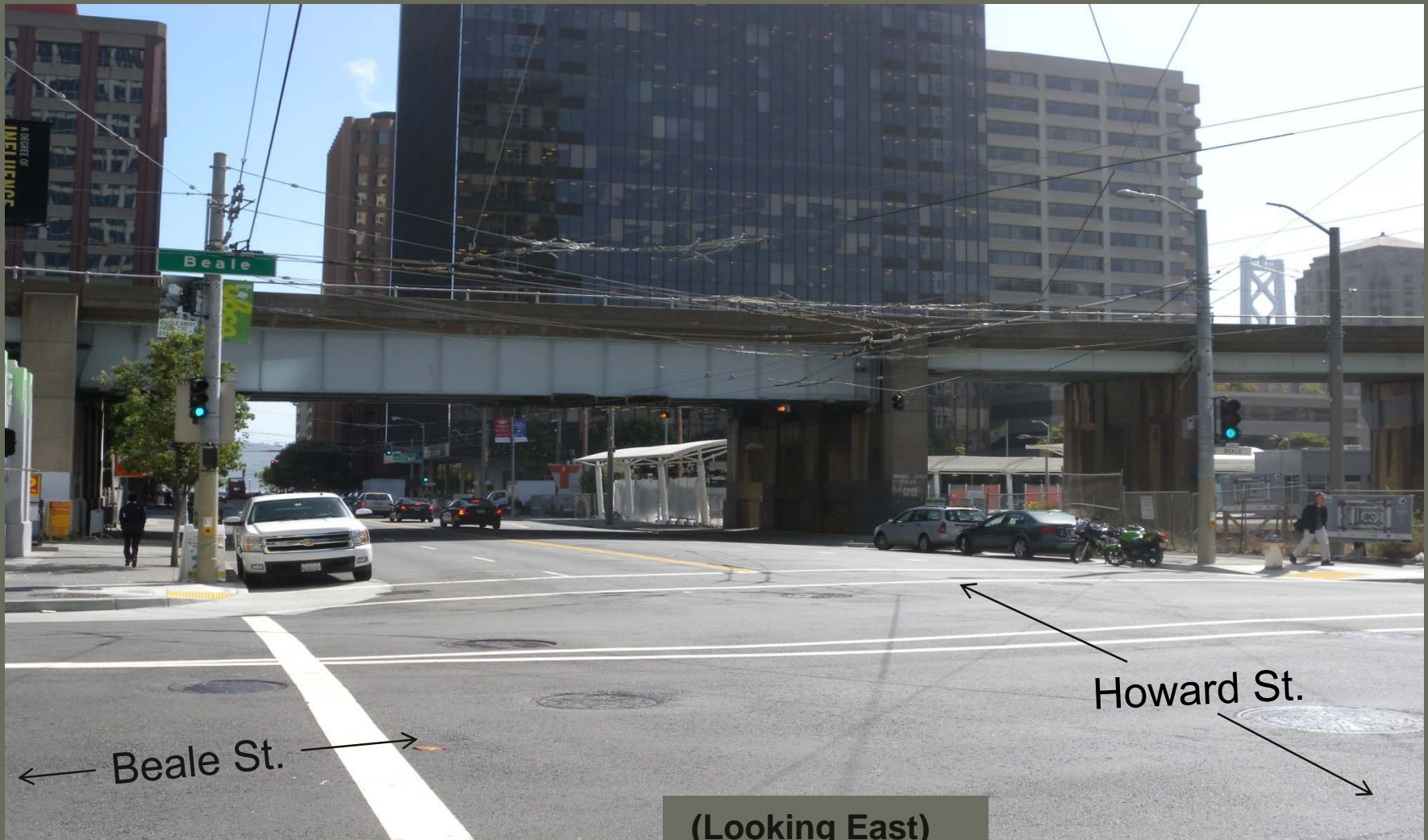


- Weekend and Night Closures:  
Fri - Mon (Midnight – 5am)  
Mon – Fri (8pm-7am)
- Weekend and Weekday Closures:  
Fri - Mon (Midnight – 5am)  
Mon - Fri (non peak hours)
- Weekday Closure:  
Mon - Fri (non peak hours)



Transbay Transit Center

1 Eastern Howard St. Crossing  
1 Weekend  
Aug 13 – Aug 16





Transbay Transit Center

2 Southern Beale St. Crossing  
Weekday Closures/1 Weekend  
Aug 20 – Aug 27



(Looking North)



Transbay Transit Center

3

# Northern Beale St. Crossing 4 Weekend Closures Aug 27 – Sept 26





Transbay Transit Center

4 Fremont St. Crossing  
5 Nights and 2 Weekend Closures  
Sept 30 – Oct 10



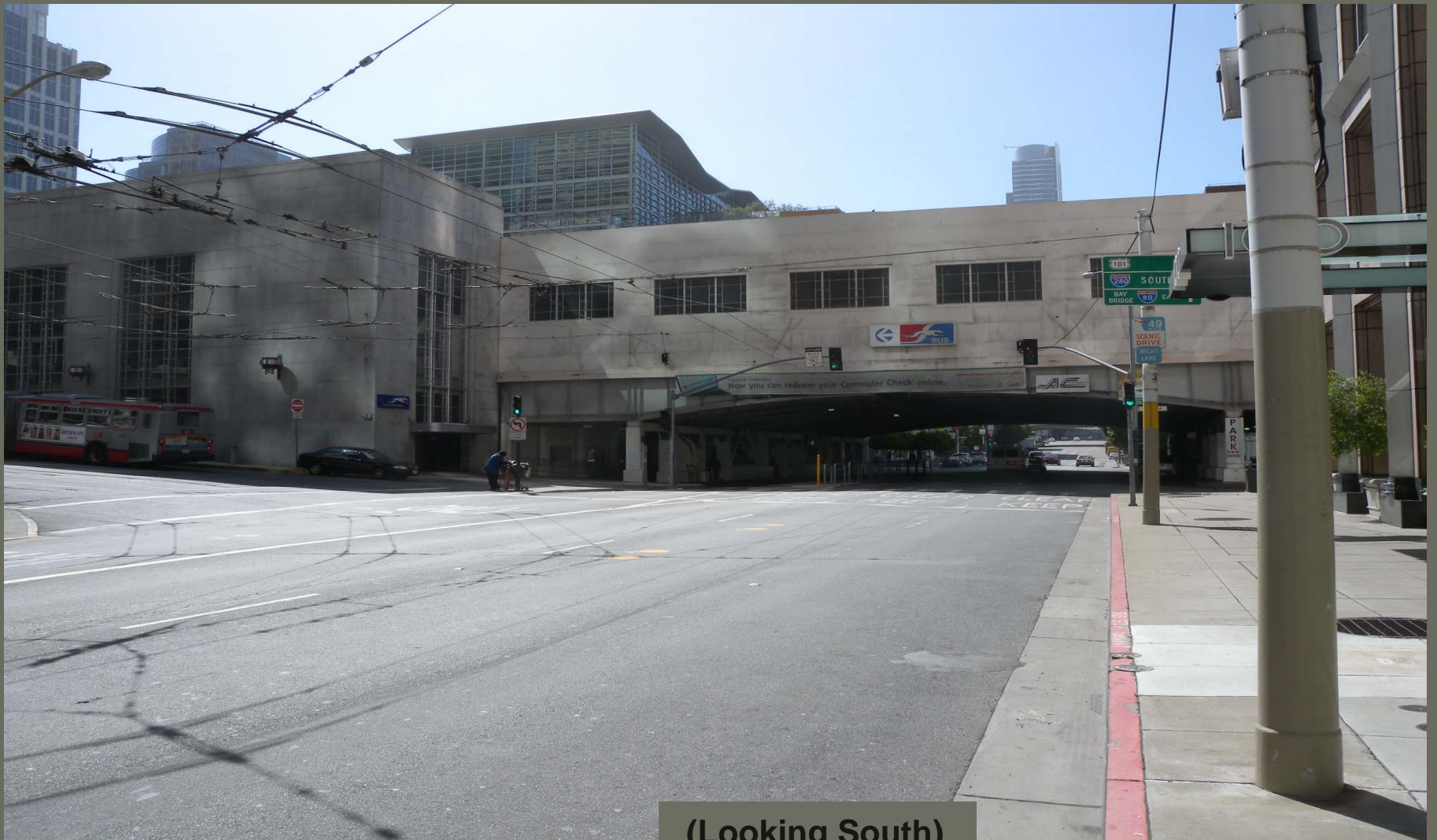
(Looking South)



Transbay Transit Center

5

# First St. Crossing 5 Nights and 2 Weekend Closures Oct 14 – Oct 24



(Looking South)





Transbay Transit Center

7

# Western Howard St. Crossing 1 Weekend Closure Dec 16 – Dec 19

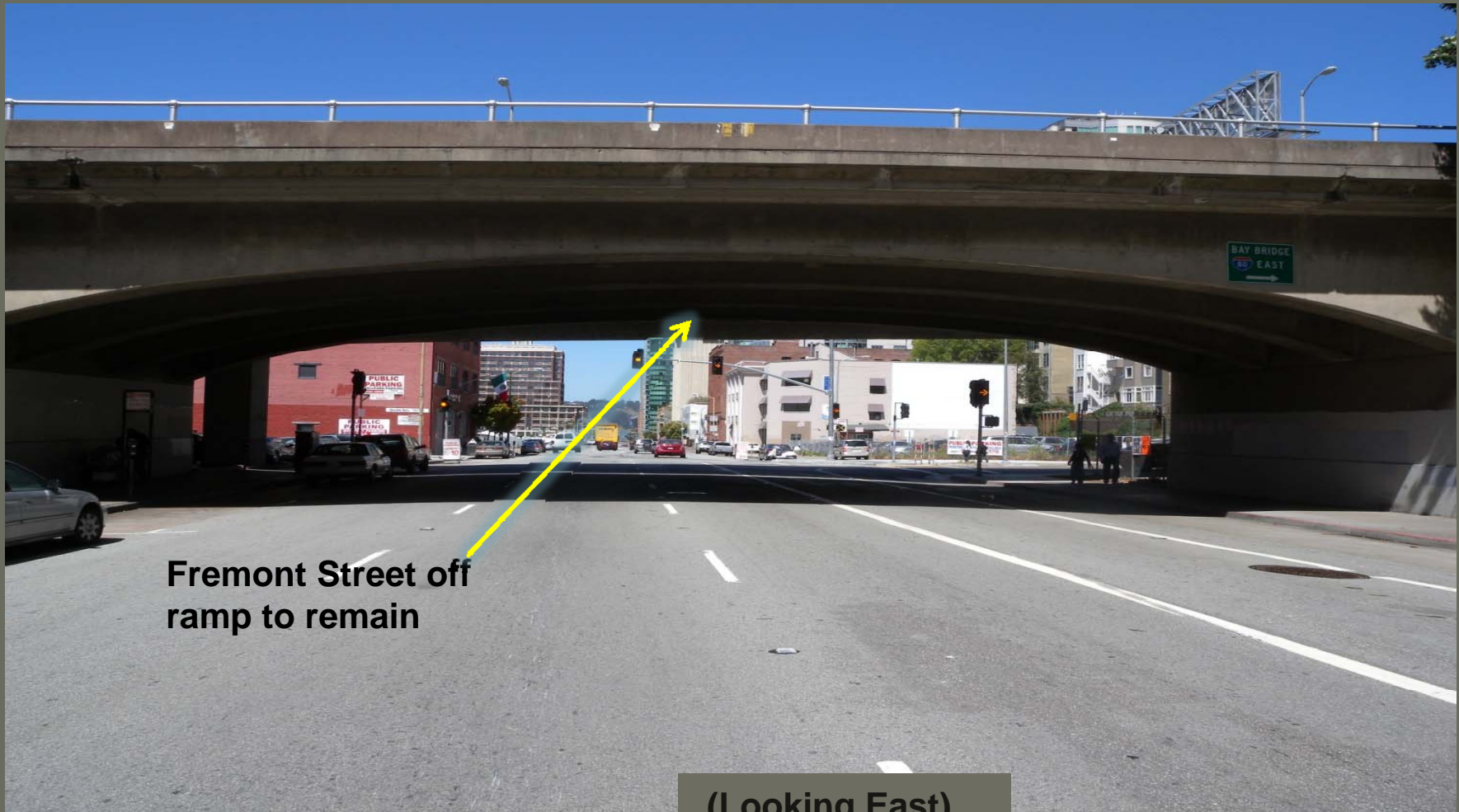


(Looking West)



Transbay Transit Center

11 Harrison St. Crossing  
Weekday Closure (non-peak)  
Dec 16 – Dec 19



Fremont Street off  
ramp to remain

(Looking East)