

An aerial photograph of San Francisco, California, showcasing the Transbay Transit Center and City Park. The Transbay Transit Center, a tall, cylindrical building with a glass facade, stands prominently on the left. To its right, the Transamerica Pyramid is visible. The City Park, a green space with trees and a small orange-roofed building, is situated between the two skyscrapers. In the background, the San Francisco Bay Bridge spans the water, and the city skyline is visible under a clear blue sky.

# TRANSBAY TRANSIT CENTER CITY PARK

**Pelli Clarke Pelli Architects**  
**PWP Landscape Architecture**



# OVERVIEW

## TRANSBAY TRANSIT CENTER

The Transbay Transit Center will provide a modern, state-of-the-art transit hub for downtown San Francisco. The new facility will draw together modes of public and private transportation, creating a grand entry point to the city in the spirit of the great stations of the world. The building's design is highly accessible, sustainable, and attractive, with a 5.4-acre public rooftop Park, grand light-filled spaces, and a unique façade. The new Transit Center is spurring development in the surrounding city blocks, anchoring the growth of a new residential mixed-use urban neighborhood.

Eight counties in the Bay Area and the state will be linked by eleven transit systems: Muni, AC Transit, Greyhound, WestCat, SamTrans, Caltrain, Golden Gate Transit, Bart, ParaTransit, Amtrak shuttle bus service, and, in the future, California High Speed Rail. There is also the possibility of a connection to Amtrak's Coast Daylight train line. In addition, there will be ample accommodation for bicyclists and taxis. By 2030, Transbay is expected to serve up to 45 million people annually.

The Transbay Transit Center will be the focus of a new neighborhood for San Francisco and a destination for retail, art, community, and cultural activities. The building must be not only an excellent and well-functioning transit center, but also a friendly place that people want to use and be near.

The building's design is graceful, luminous, welcoming, and safe. Its undulating metal exterior wall with forms like the petals of a flower and perforated with a beautiful pattern created by the British mathematical physicist, Dr. Roger Penrose, is shaped to reduce the scale of this very large structure. On the interior, the building is suffused with natural light. "Light Columns" bring natural light deep into the building, creating a cheerful, healthful atmosphere. The largest Light Column forms the central element of the 120-foot tall Grand Hall, Transbay's primary space. From the train platforms to the rooftop park, the Transbay Transit Center is open, light-filled, and accessible.

The Transbay Transit Center is scheduled to be complete in the fall of 2017.

## CITY PARK

On the roof of the Transit Center will be a densely planted and active urban park. The Park accomplishes multiple purposes not only for passengers, but also for this newly developing neighborhood. Over the course of San Francisco's history, urban parks have often served as the stimulus for neighborhood development.

The Park will be 5.4 acres in size and have over a dozen entry points, potentially including bridges to surrounding buildings. Active and passive uses are woven into the natural landscape, with features ranging from a music amphitheater for up to 1,000 people, restaurant, cafe, and a children's playground. Passive uses such as reading, picnicking or simply taking a break for lunch will be encouraged in numerous quiet areas.

One of the Park's central features will be a 1,000-foot-long fountain with jets of water triggered by the movement of buses arriving and departing below. The walking path around the park's perimeter will be approximately one half mile long. This would allow an annual 5K race to be conducted in approximately six laps.

Twelve smaller gardens placed throughout the Park will be keyed to a variety of plant life and environmental conditions, including Chilean, Mediterranean, and South African gardens; palm and grass gardens; as well as gardens keyed to wetlands and environments typical of the Bay Area. The park is conceived to be a significant teaching tool, and its environments will be extensively labeled to allow for both formal and informal educational opportunities.



**Lower Concourse**



**Train Platform**



**CALTRAIN PLATFORM**





GRAND HALL

MISSION SQUARE



PUBLIC CONCOURSE  
& WAITING AREA



RETAIL



Building Levels

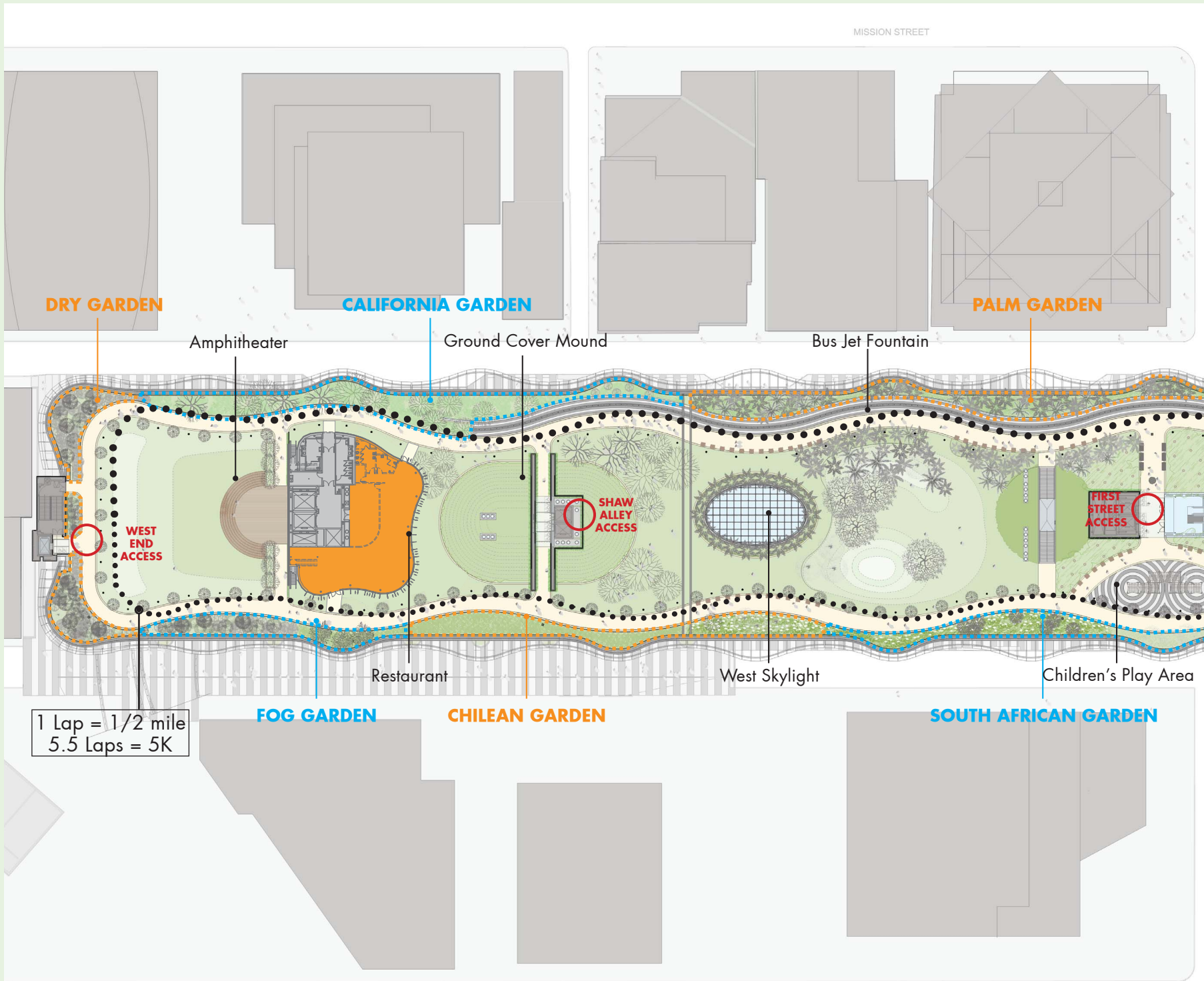
The Transit Center is made up of 3 stories above grade and 2 stories below with a 5.4-acre park on top of the building. The rooftop park will be visible from all approaches around the site. Through expansive glass floor and skylights, the rooftop park will also be visible from the interior of the building.



CALIFORNIA  
HIGH-SPEED  
RAIL PLATFORM



CALIFORNIA  
HIGH-SPEED  
RAIL PLATFORM

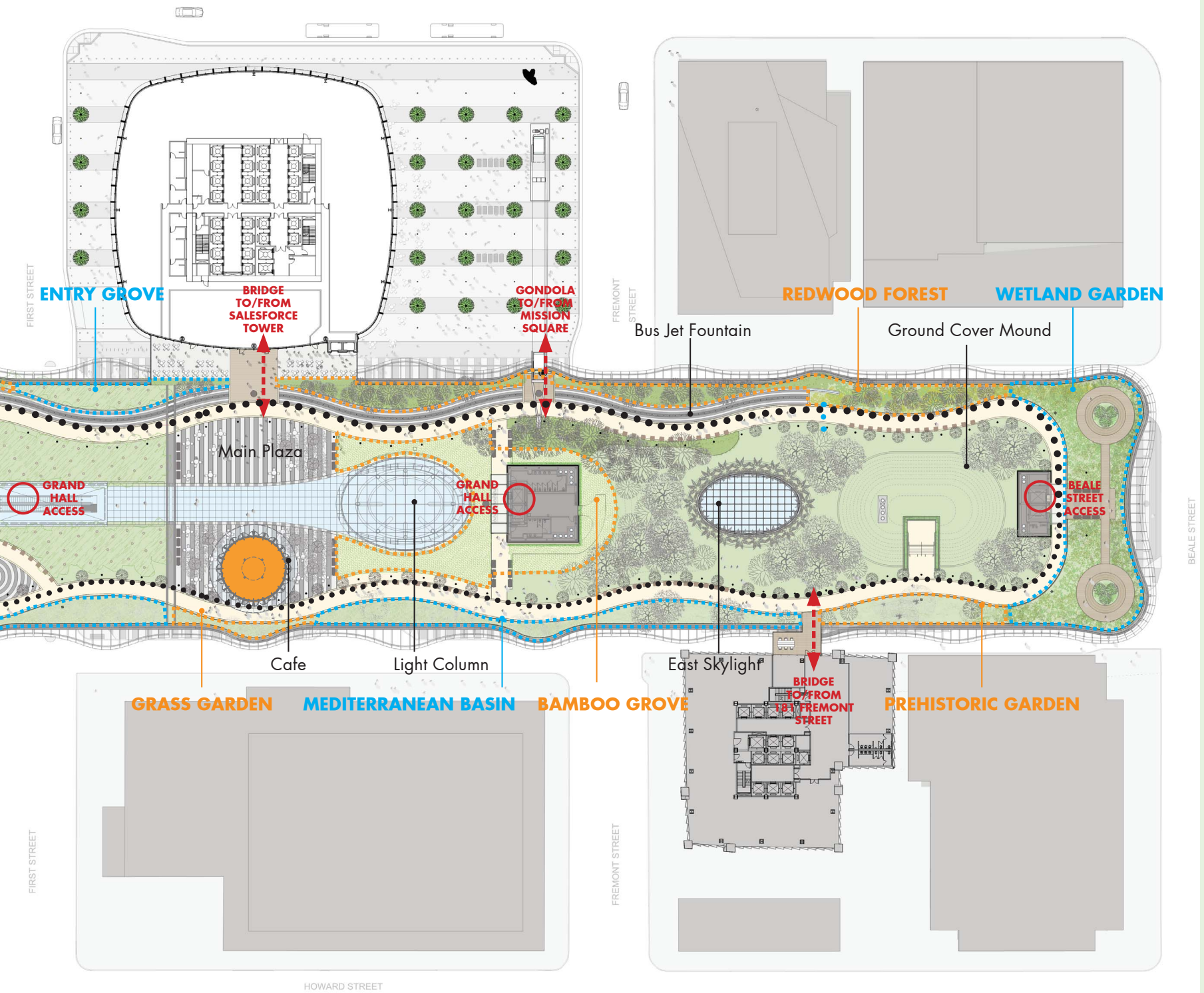


## ROOF PARK LEVEL

The 5.4-acre rooftop park will have over a dozen smaller gardens keyed to a variety of natural environments. A sloped lawn will create a natural amphitheater for the gatherings of up to 1,000 people for concerts, stage performances and neighborhood film festivals. A 1,000-foot-long fountain will have water jets that are animated by the movement of the buses below.

Visitors arriving to the park are greeted by a beautiful grove of trees, lawns, and a fountain. There are views of San Francisco Bay to the east and the Financial District to the north and west. A new residential and mixed-use neighborhood to the south will bring additional visitors to the park.

From nearby buildings, the Park will be a powerful presence. Over time, bridges will connect adjacent buildings to this lively outdoor space. The Park's varied activities and rich landscape will make a welcome daily experience for those living and working in this growing neighborhood. From a distance in the evening, the Park will glow with soft pools of light and activity. The Transit Center and its rooftop park will become a haven in the center of a busy city.







DAY AERIAL VIEW





VIEW FROM FIRST STREET





**VIEW FROM MISSION SQUARE**





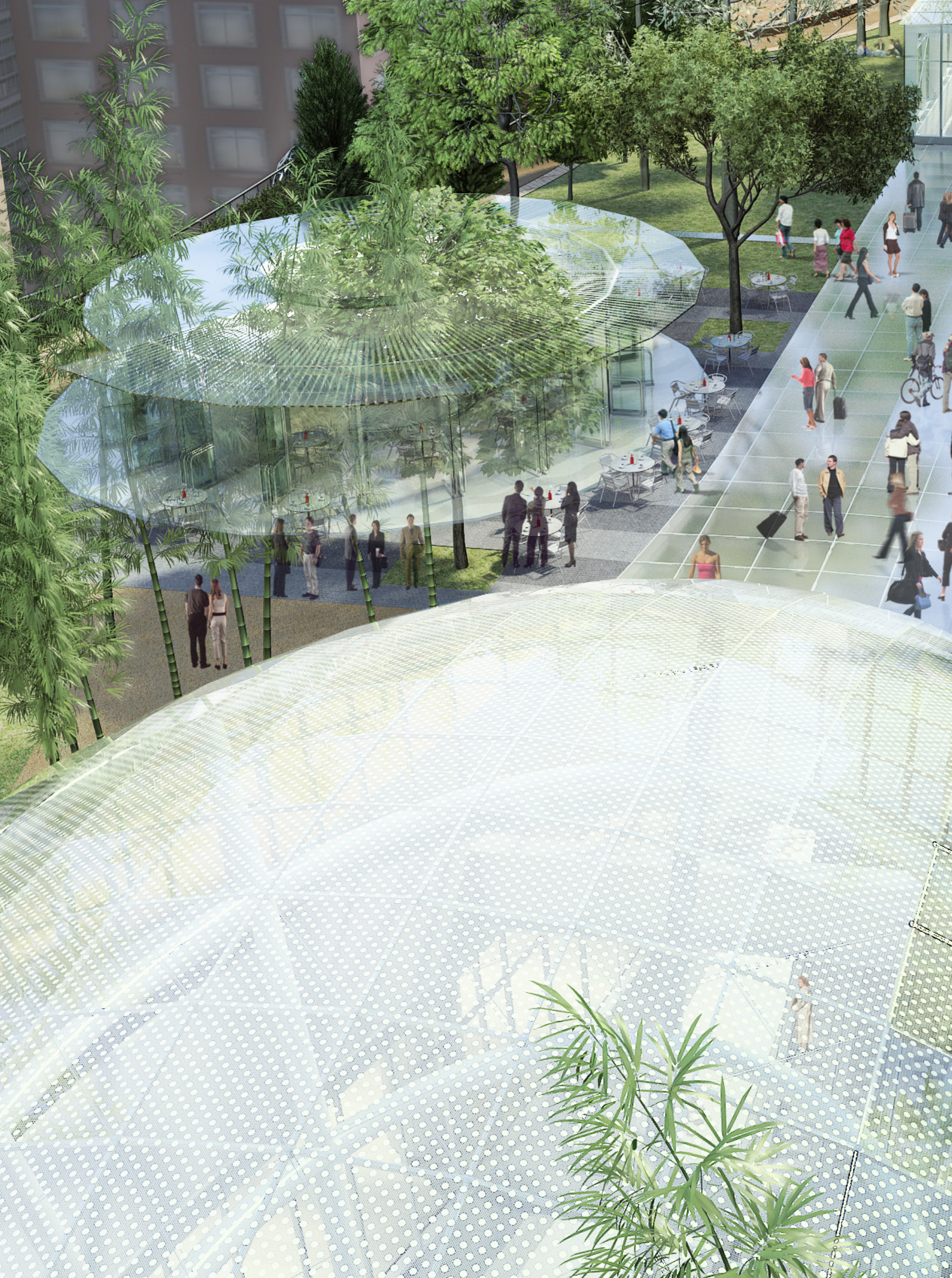
GRAND HALL VIEW OF LIGHT COLUMN



GRAND HALL VIEW UP TO BUS DECK AND PARK



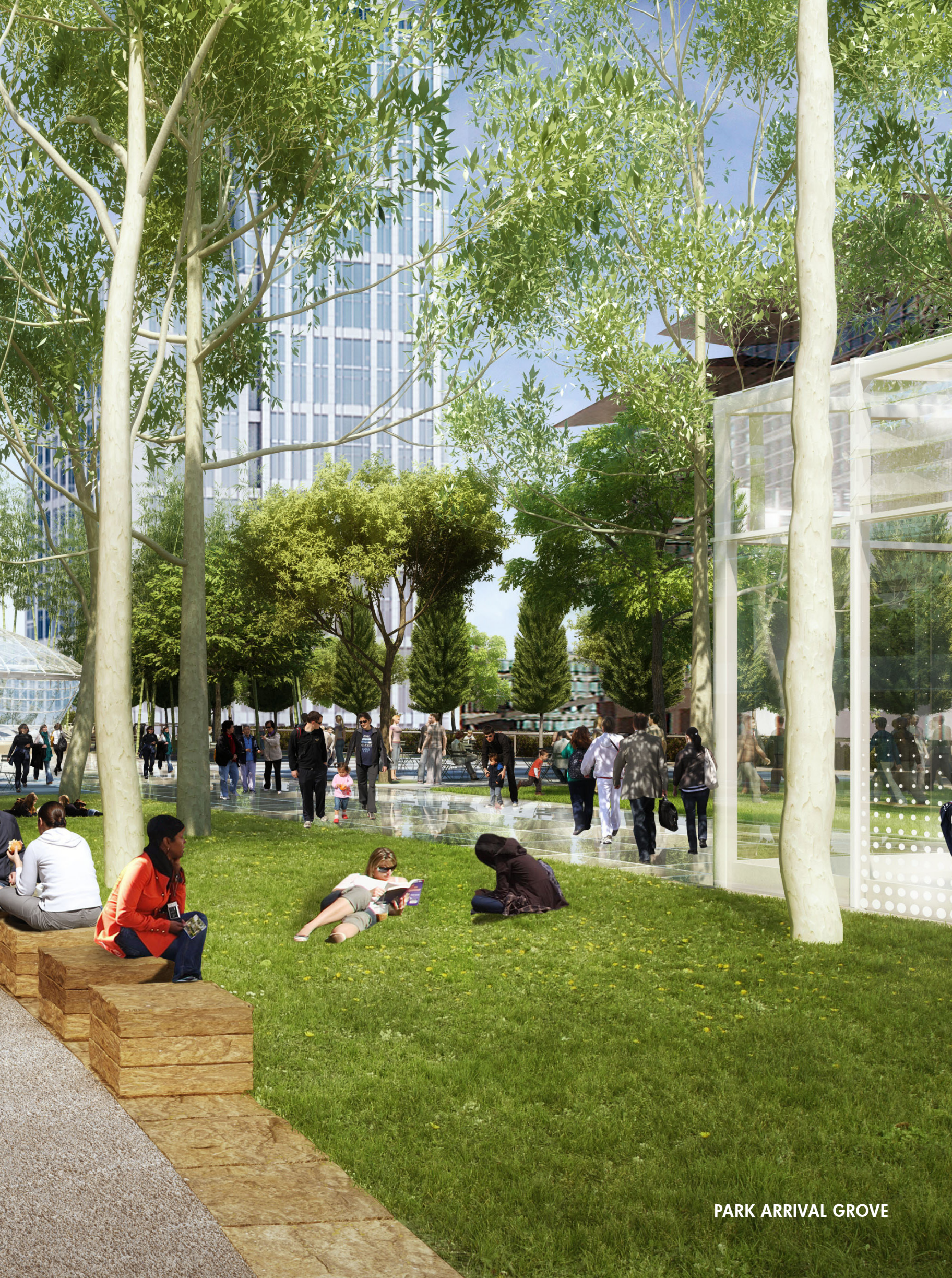
GRAND HALL VIEW FROM ESCALATORS





MAIN PLAZA





PARK ARRIVAL GROVE





VIEW FROM LIGHT COLUMN





VIEW FROM MAIN PLAZA









NIGHT AERIAL VIEW

**TRANSBAY**  
TRANSIT CENTER  
S A N F R A N C I S C O

**TJPA**

TRANSBAY JOINT POWERS AUTHORITY

**Pelli Clarke Pelli** Architects